

Tema - fra blæserkvintet 3. sats

C. Nielsen

Koral

117

Carl Nielsen 1919

Est du mod-fal - den, kæ - re ven, som tror dog på Guds

Søn, og be - der i hans frel-ser-navn din e - gen bar - ne - bon:

Copyright 1919-1947 by Wilhelm Hansen, Copenhagen

Blæserkvintet

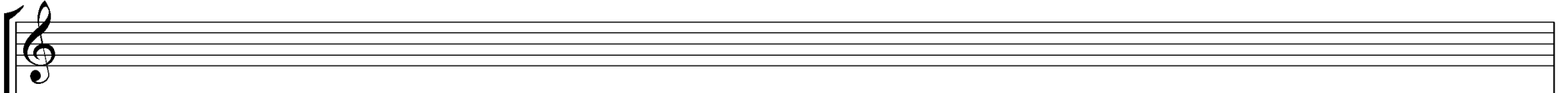
PROMENADE

Moderato comodo e con delicatezza

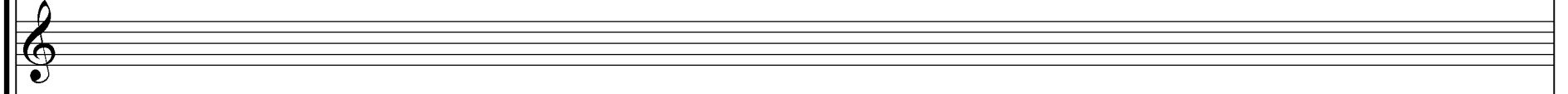
Musical score for the piece "Promenade" (B. & H. 8729), measures 1 through 6. The tempo is "Moderato comodo e con delicatezza". The score is written for a large ensemble, including three flutes, one oboe, two clarinets (Sib and Sib/Bb), one bassoon, two fagots, one horn (F), two violins, and piano/fortepiano.

The score is divided into two systems. The top system covers measures 1-6, and the bottom system covers measures 7-12. Dynamics include *p* (piano) and *f* (forte). The piece is in the key of E-flat major (three flats) and 4/4 time. The first solo is marked "I. Solo" for the fagot in measure 3. The piano part features complex arpeggiated textures in the right hand and more rhythmic accompaniment in the left hand.

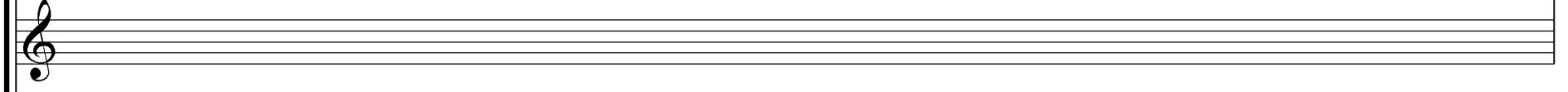
Flute



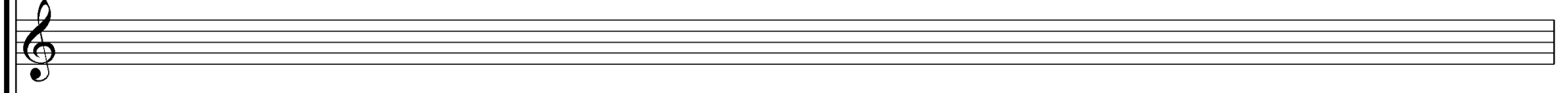
Oboe



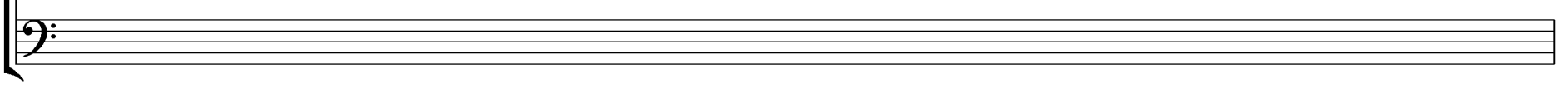
Clarinet in B \flat



Horn in F



Bassoon



EXAMPLE 33 THE LITTLE MAN THEME

Easy

4 Alto Flutes

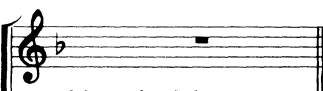
W.W. 

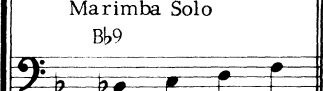
Guit.  F7. F9 / / / F9 / Gb9 F9 Db9(b5) C9 B9+5

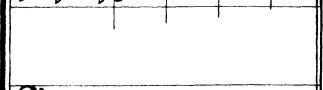
Bass 


Pno.  (8)


Dr.  Brushes (4)

W.W. 

Guit.  Marimba Solo Bb9

Bass 

Pno. 

Dr. 

EXAMPLE 34 A COOL SHADE OF BLUE

Side B, Band 1

Easily

Alto Flute Solo


W.W. 

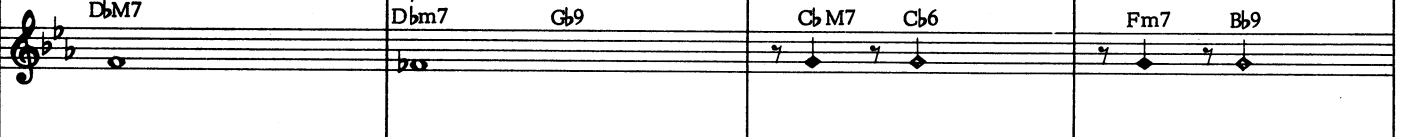
W.W. 

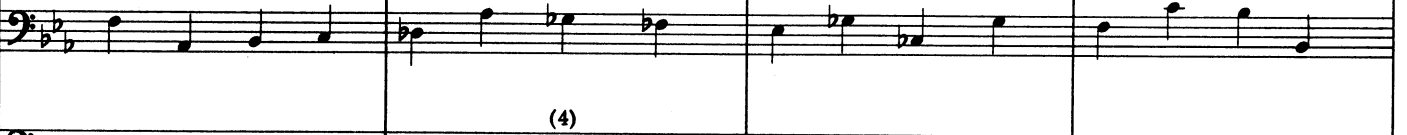
Guit.  1 Alto Saxophone 2 Alto Flutes Ab Ebm7 Ab9

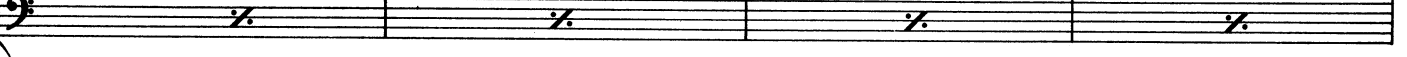
Bass  (8) (4)

Dr. 

W.W. 

Guit.  Dbm7 Dbm7 Gb9 CbM7 Cb6 Fm7 Bb9

Bass 

Dr.  (4)

EXAMPLE 57 THAT'S IT AND THAT'S ALL

Side C, Band 2

Bright

3 Alto Flutes

1 Clarinet

Bassoon

W.W.

Guit. Bass

Dr.

C / / / Gm7 / C9 / FM9 / / F6 Bm7 E9 /

(8) (4)

W.W.

Guit. Bass

Dr.

Bbm7 / Eb9 / Am7 / D9 / GM9 / G6 / Dm7 / G9 /

(8)

EXAMPLE 58 CHIME TIME

Side C, Band 2

W.W.

Cel. Bells

Dr.

Bells

Brushes on Snare

3 Alto Flutes

1 Clarinet

1 Bassoon

N.W.

Cel. Bells

Guit. Bass

Dr.

(4) (8)