

362.

RED CLAY

- FREDDIE HUBBARD

(Rock)

FREE BLOWING:

(C-7) (Ab7)

(G+7) (C-7)

(RHYTHM SECTION:)

A

(C-7 (ii)) Bb-7 (ii) Db7sus4 Eb7sus4 1. F7sus4 G7sus4 2. F7sus4 G7sus4

(TRUMP:) B

C-7 (ii) Bb-7 (ii) Db7sus4 Eb7sus4
F7sus4 G7sus4 C-7 (ii) Bb-7 (ii)

Db7sus4 Eb7sus4 1. F7sus4 G7sus4 2. F7sus4 G7sus4

C-7 (ii) Bb-7 (ii) Db7sus4 Eb7sus4 F7sus4 G7sus4

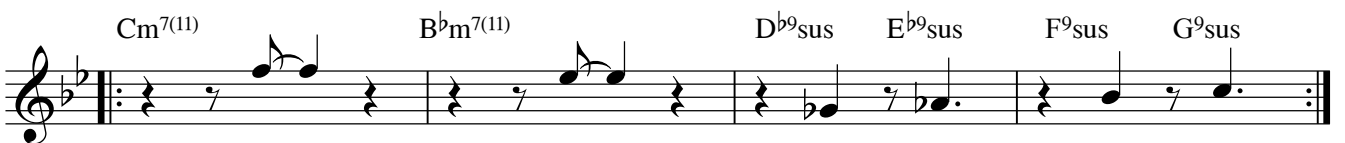
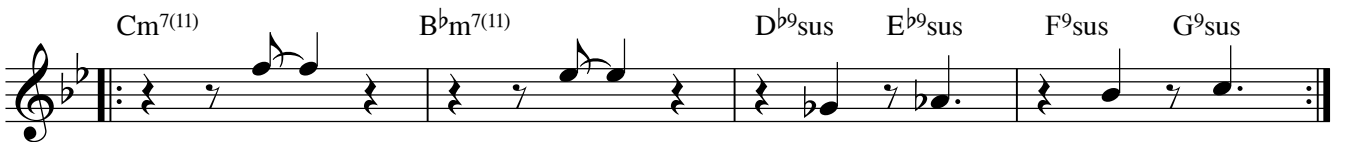
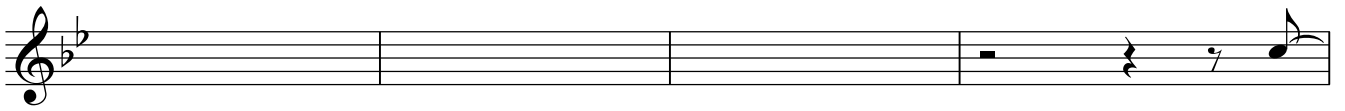
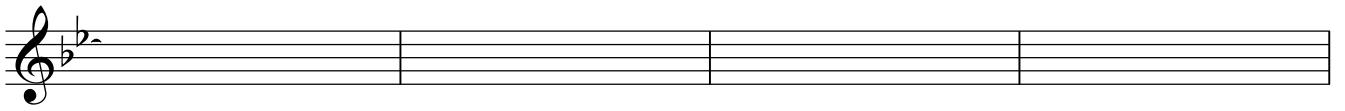
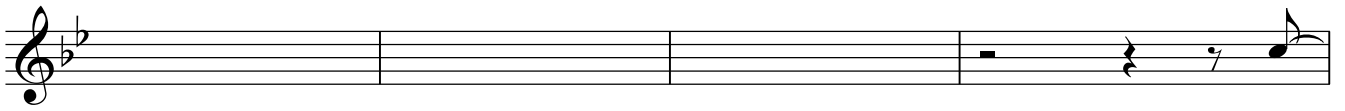
C

C-7 (ii) Bb-7 (ii) Db7sus4 Eb7sus4 F7sus4 G7sus4

(SOLOS:) D

C-7 Bb-7 Eb7 Ab7sus4 D-7(b9) G+7

Red Clay



Red Clay

A Cm⁷⁽¹¹⁾ B^bm⁷⁽¹¹⁾ D^{b9}sus E^{b9}sus F⁹sus G⁹sus

Piano

B Cm⁷⁽¹¹⁾ B^bm⁷⁽¹¹⁾ D^{b9}sus E^{b9}sus F⁹sus G⁹sus

Pno.

C Cm⁷⁽¹¹⁾ B^bm⁷⁽¹¹⁾ D^{b9}sus E^{b9}sus F⁹sus G⁹sus

Pno.

D Cm⁷ B^bm⁷ E^{b7} A^{bΔ} D[∅] G⁷

Pno.

Red Clay

INTRO

Piano Bass Drums

$Cm7(11)$ A^b7 $G7\#5$ $Cm7(11)$

Play 2x **A**
Play 4x **B**

Pno. Bass Bs. Dr.

$Cm7(11)$ $B^bm7(11)$ D^b9sus E^b9sus F^9sus G^9sus

A: 2.x only
B: 2.x only

C

Pno. Bass Bs. Dr.

$Cm7(11)$ $B^bm7(11)$ D^b9sus E^b9sus F^9sus G^9sus

D

Piano Bass Drums

$Cm7$ B^bm7 E^b7 $A^b\Delta$ $Dm7^b5$ $G7\#5$

E

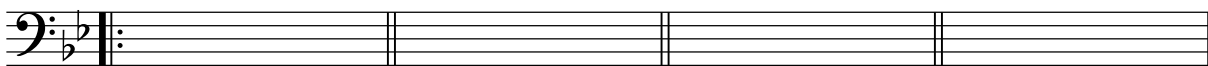
Piano Bass Drums

$Cm7(11)$

Red Clay

INTRO

Piano
Bass
Drums



A Play 2x

B Play 4x

Piano and Bass staves for section A and B. Section A is marked 'Play 2x' and section B is marked 'Play 4x'. The piano part is in treble clef and the bass part is in bass clef. Both are in a key signature of two flats. The bass part includes a separate staff labeled 'Bs.' and a drum staff labeled 'Dr.' with a double bar line and repeat sign.

C

Piano and Bass staves for section C. The piano part is in treble clef and the bass part is in bass clef. Both are in a key signature of two flats. The bass part includes a separate staff labeled 'Bs.' and a drum staff labeled 'Dr.' with a double bar line and repeat sign.

D

Cm⁷

B^bm⁷

E^b7

A^bΔ

Dm⁷bs

G7[#]5

Piano
Bass
Drums

